



ROSEBURN PRIMARY SCHOOL

LANDSCAPE CONCEPT

ED13817-WA-RP-L-0001 - P01

EXISTING SITE CONDITIONS

SITE ANALYSIS

Roseburn Primary is a traditional Victorian era primary school with additional modern buildings facing onto the northern play area. The school has generously sized grounds which offers many design opportunities.

The current school playground surface is predominately hard landscape. Planters and raised beds offer some soft landscape, as well as existing trees at the west side of the playground. There are a few play elements dotted throughout. Currently the playground is utilised well by children but could offer more variety.

The site drains towards the nursery in the northwest corner with a low point at 04 on the map. Majority of the playground receives sunlight, apart from areas directly to the back of the building which would be in shade during the day.

Existing Features

- 01. Entrance play area
- 02. Existing open play space and sports area
- 03. Wildlife Garden
- 04. Puddle area only on wet days
- 05. Wooden Gazebo
- 06. Remaining rubber crumb surface
- 07. Tunnel and flower beds
- 08. Remaining trim trail equipment



LANDSCAPE STRATEGY

CHARACTER AREAS

Following on from site analysis and a review of the Learning Through Landscape report, a landscape zoning plan has been developed. As outlined in the Learning Through Landscape report, there are many good existing aspects of the playground that can be expanded and enhanced to bring more outdoor learning opportunities.

Key design principles:

- Creating a strong and attractive frontage to the entrance of the primary school
- Enhance and add to the existing playground, increase play and outdoor learning opportunities
- Improve biodiversity value and increase areas of soft landscaping

1. ENTRANCE
2. SPILL OUT SPACES
3. RAINGARDEN
4. WOODLAND PLAY
5. SAND PIT
6. NATURE CORNER & ALLOTMENTS
7. OUTDOOR CLASSROOM
8. OPEN SPACE PLAY



LANDSCAPE CONCEPT

PRECEDENT IMAGES

1. ENTRANCE

- A more welcoming and attractive entrance
- Break up long space into smaller areas
- Gathering areas/ seating
- Utilise railing and wall space
- Shelter and screening
- Creative activities



LANDSCAPE CONCEPT

PRECEDENT IMAGES

2. SPILL OUT SPACES

- Create semi-private spaces that allow flexible outdoor learning close to the classrooms
- Provide a range of elements like chalkboards, water play, loose part play
- Include sensory and calming areas as break out for children during class time, or as spaces to sit and relax during play time
- Utilise existing basketball hoop and make into a half basketball court
- Increase storage opportunities



3. RAINGARDEN

- Raingardens as a solution to the puddle area from surface water runoff
- Raingarden to include a variety of planting and trees
- Timber bridge for crossing
- Play elements like boulders and stepping stones



LANDSCAPE CONCEPT

PRECEDENT IMAGES

4. WOODLAND PLAY

- Creation of Wee Forests
- Add to existing trim trail
- Bug hotels
- Wildlife enhancement
- Nature learning



5. SANDPIT

- Sandpit with natural edging which can also act as seating
- Timber deck for seating
- Boulders and climbing structures

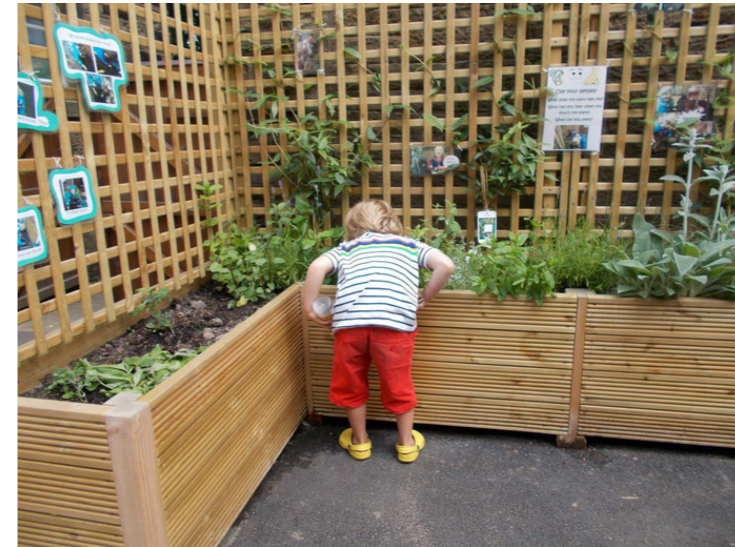


LANDSCAPE CONCEPT

PRECEDENT IMAGES

6. NATURE CORNER & ALLOTMENTS

- Existing nature and wildlife garden
- Include seating for outdoor learning and used as a quiet space
- Vertical panels or screens to display information about nature
- Planting that promote wildlife, food growing as food science learning opportunities
- Bug hotel
- Storage



7. OUTDOOR CLASSROOM

- Retain existing outdoor classroom upgrade and make good



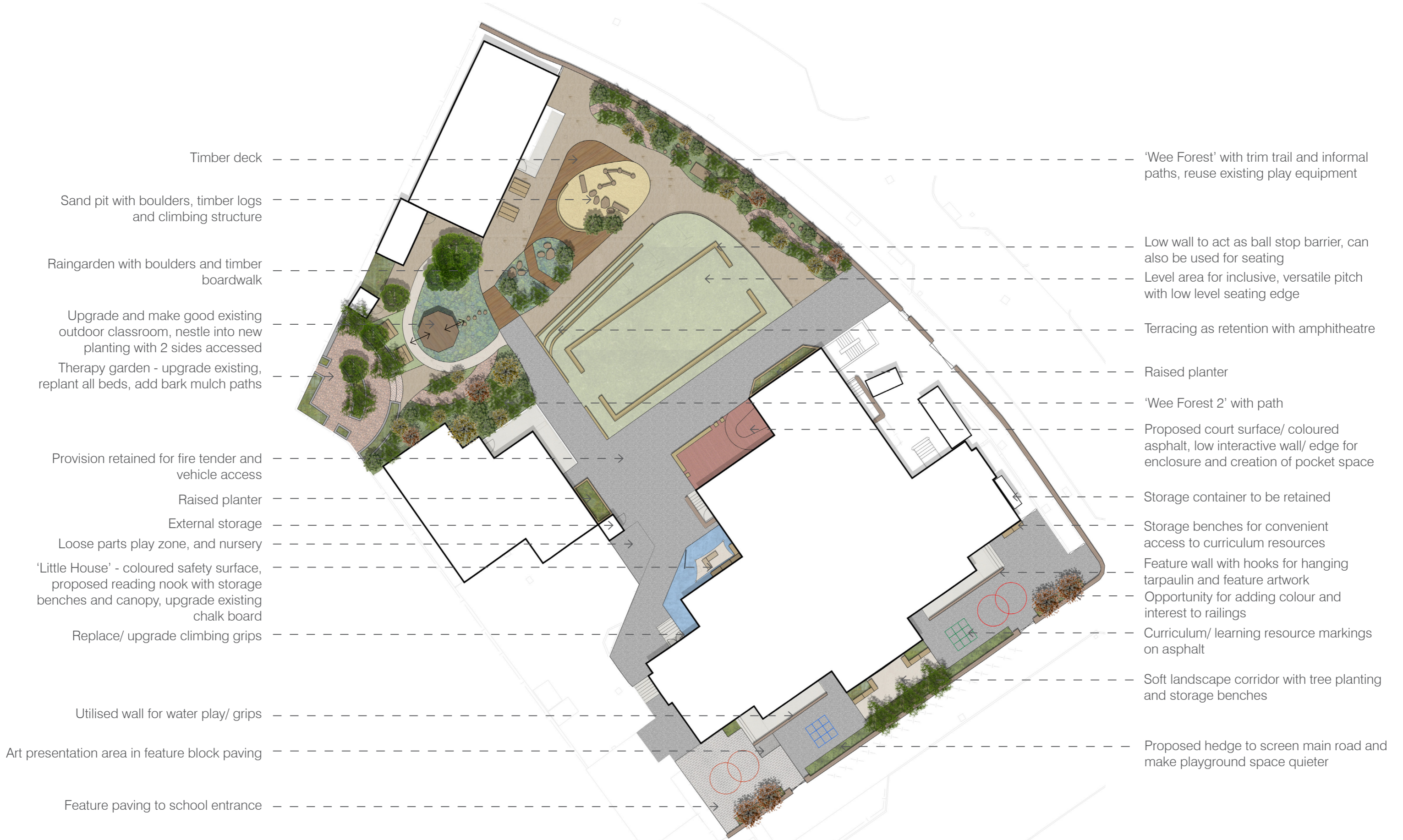
8. OPEN SPACE

- Can remain as hard or can become grassed
- Forming a level area for Inclusive and multipurpose play



LANDSCAPE CONCEPT

LANDSCAPE GENERAL ARRANGEMENT



LANDSCAPE CONCEPT

AXONOMETRIC SKETCH VISUAL

Therapy garden - upgrade existing, replant all beds, bark mulch paths/ surfacing

Upgrade and make good existing outdoor classroom, nestle into new planting with 2 sides accessed

Raingarden with boulders and timber boardwalk

Sand pit with boulders, timber logs and climbing structure and surrounding deck

Terracing as retention with amphitheatre

'Wee Forest' with trim trail and informal paths, reuse existing play equipment

Feature paving to school entrance with seating/ storage elements

Tree and hedge planting to front boundary



LANDSCAPE CONCEPT

QUICK-WINS

QUICK WINS

The following diagram explores the 'quick wins' that could be adopted within the playground to elevate the quality of the space without the need for construction-level intervention.

These low cost updates to the landscape can be carried out by staff and students

Upgrade therapy garden, replant beds as learning resource garden



Willow edge structural planting
Feature archway



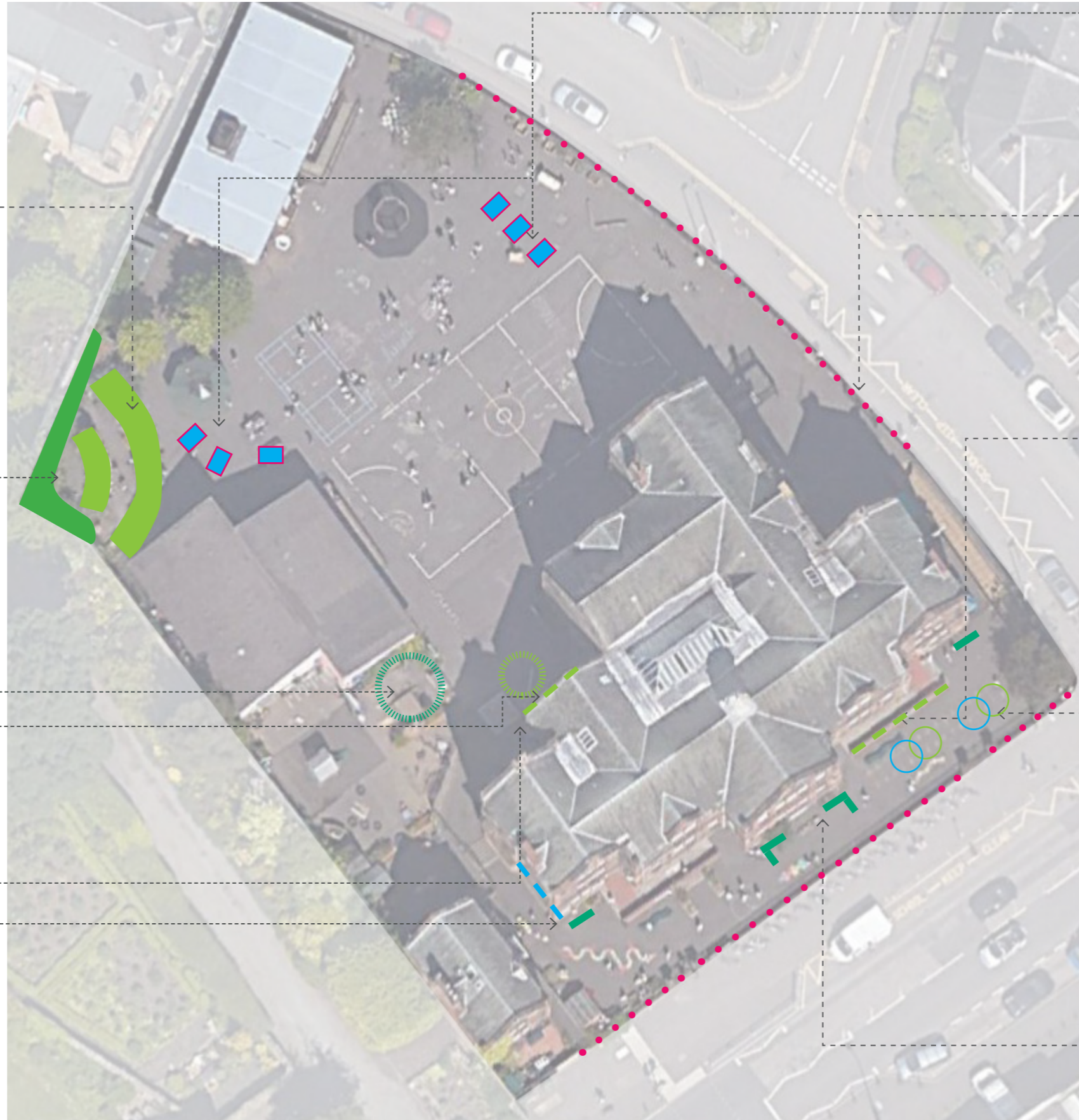
Loose part play zone
Upgrade chalk board



Utilised wall for water play/ grips



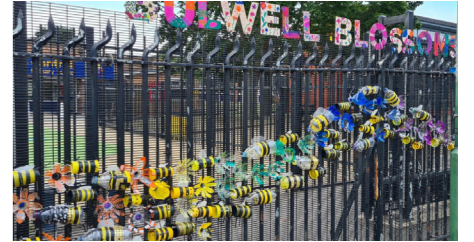
ROSEBURN PRIMARY SCHOOL



Add picnic benches



Opportunity for adding colour and interest to railing



Feature wall with hooks for hanging tarpaulin and feature artwork



Curriculum/ learning resource markings on asphalt



Installing banches with incorporated storage



LANDSCAPE CONCEPT

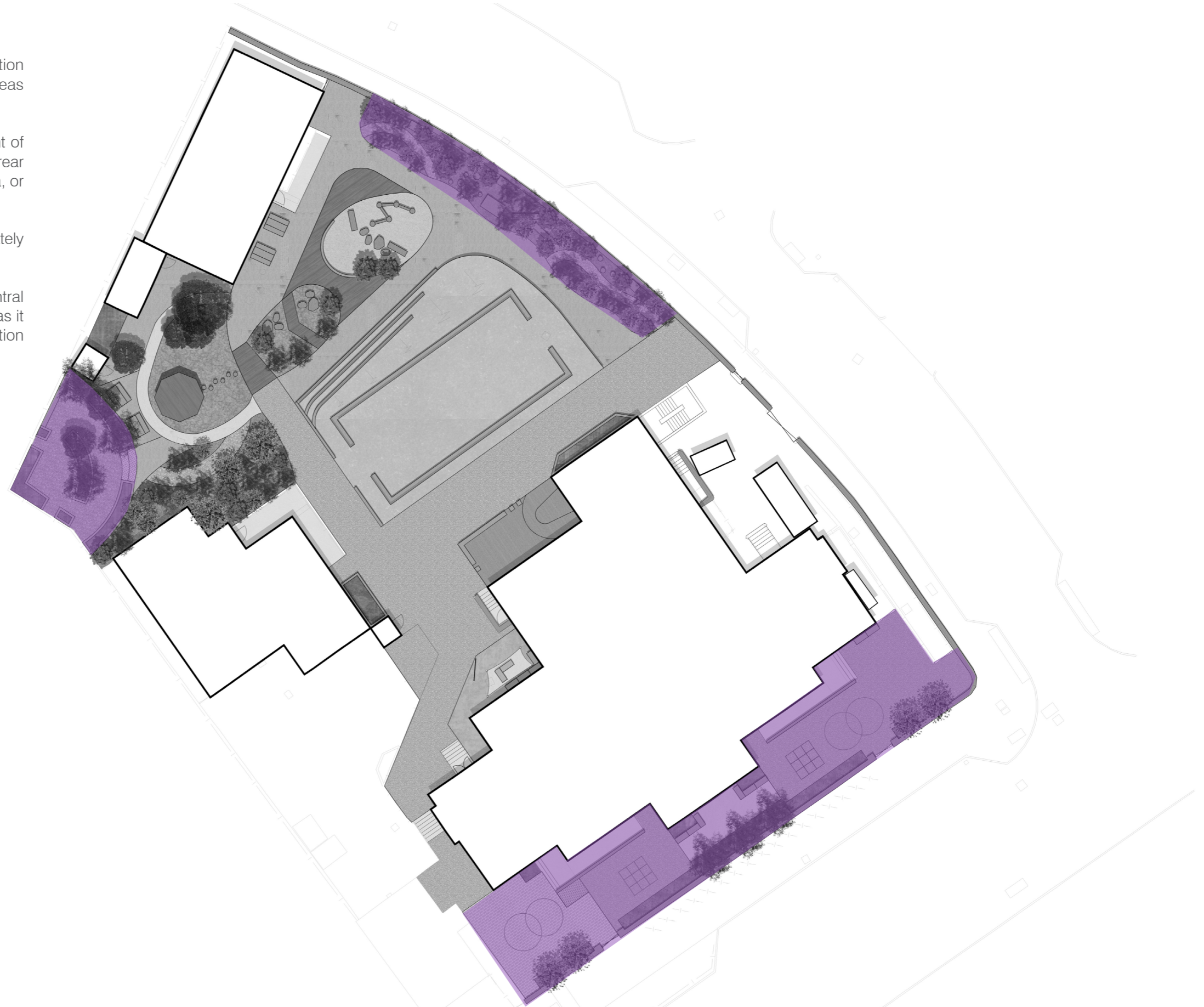
PHASING PLAN - PHASE 1

The following diagrams set out a suggested construction phasing plan, which aims to keep usable outdoor areas available throughout the works.

Phase 1 focuses on smaller interventions to the front of school, as well as soft landscape interventions to the rear that don't impede of the central hard landscape area, or student circulation.

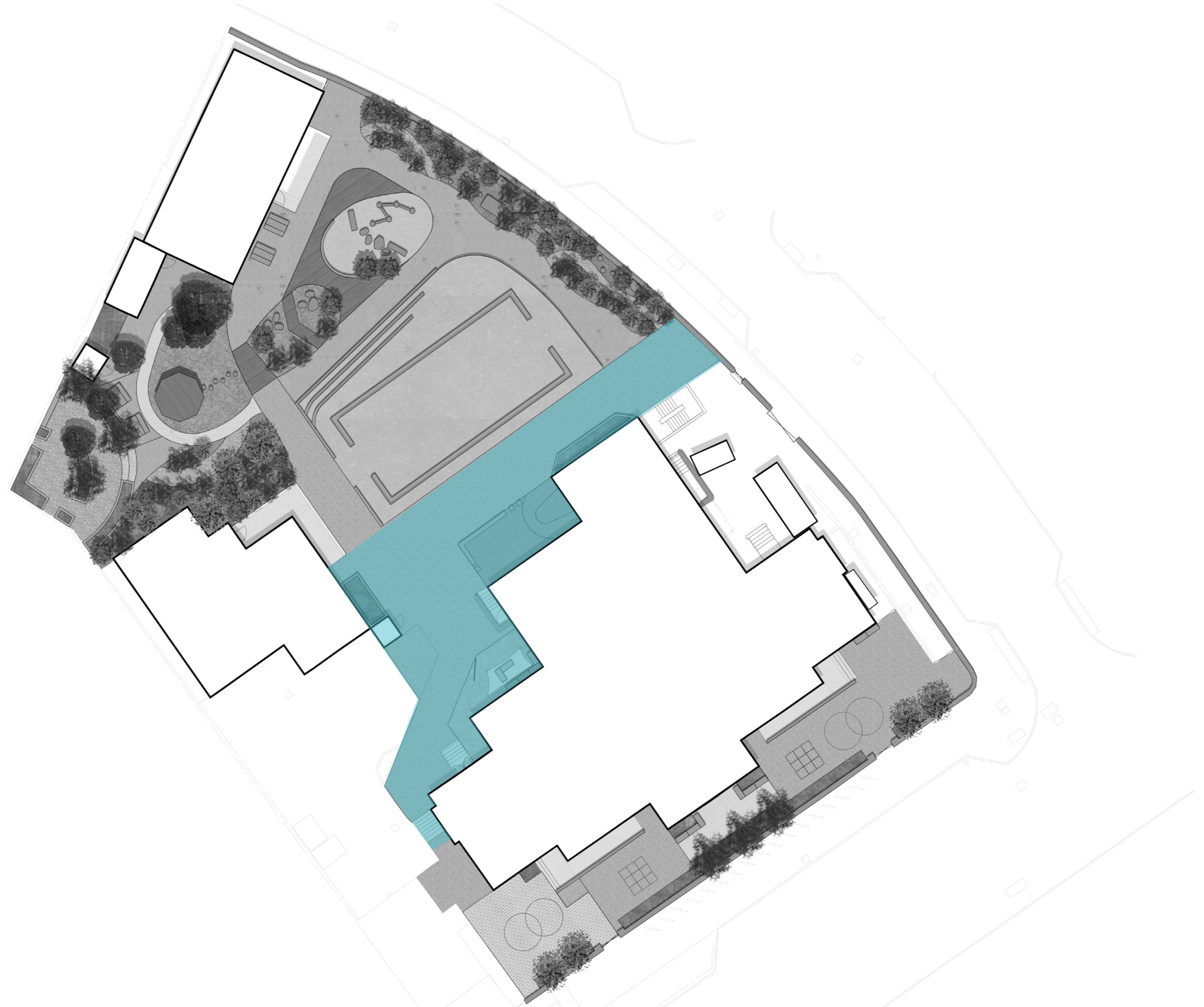
Phase 2 focuses on the hard landscape immediately north of the building.

Phase 3 focuses on the re-landscaping of the central northern play area, this is the most extensive works as it requires regrading of the topography and the installation of new surfaces.



LANDSCAPE CONCEPT

PHASING PLAN - PHASE 2



LANDSCAPE CONCEPT

PHASING PLAN - PHASE 3

